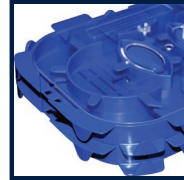


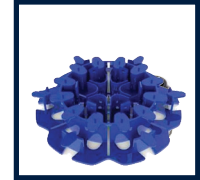
FIBRE SLIDING TRAY

FEATURES:

- High density tray accepts up to 36 spliced fibre cores
- Supplied with 2x 24 position splice cassettes (installed)
- Supplied with internal cable management accessories and cable gland
- 2 tier screwless fibre adapter plates allow fibre adapters to sit flush with the front face of the tray (purchased separately)
- Compatible with MPO / MTP cassettes
- Telescopic rackmount brackets
- 6x 20mm rear cable gland entry points
- Easy panel identification labeling
- High quality tray, made from cold rolled steel
- Dimensions: 483x200x44mm (WxDxH)
- Colour: Black gloss
- Weight fully loaded: 2.6 Kg



2 x 24 Position Splice Cassettes



Supplied with Fibre Management Spool and Cable Gland



2 Tier Screw less Fibre Adapter Plates (Purchased Separately)



Front Protection Plate FPP-FFP



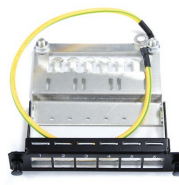
2 x 25mm and 2 x 20mm Rear Cable Gland Entry Points



Telescopic Rackmount Brackets



FPP3PB



FPP-KS6



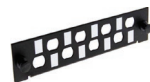
FPP-B



FPP-SCD6



FPP-BPSC



FPP-STS8



FPP-SCS8



FPP-BPLC

PRODUCT CODES

MODEL CODE	TYPE
FPP3PB	3 Slot Enclosure
FPP-FFP	Front Face Protection Plate
FPP-B	Blanking Plate - Black
FPP-SCD6	SC Duplex / LC Quad 6 Port Plate
FPP-SCS8	SC Simplex / LC Duplex 8 Port Plate
FPP-STS8	ST Simplex / FC Simplex 8 Port Plate
FPP-KS6	6 Port Unloaded Keystone Plate
FPP-BPSC	Blanking Plug for FPP-SCD6 Plate
FPP-BPLC	Blanking Plug for FPP-SCS8 Plate