

Mini Outdoor HD Wireless Network Camera

IC-9110W



Keep An Eye On What You Care About The Most, Anytime and Anywhere

The Edimax IC-9110W HD Wi-Fi outdoor network camera is a versatile monitoring device ideal for monitoring your home, shop or factory during the daytime or at night. The IC-9110W is the first innovative home security design to feature an outdoor network camera with indoor Wi-Fi base station. With Edimax Plug-n-View technology, no complicated setup is required and you can easily connect the camera to the cloud and monitor remotely from a smartphone, tablet or laptop.

EdiView II

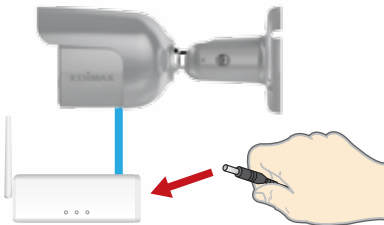


Free App

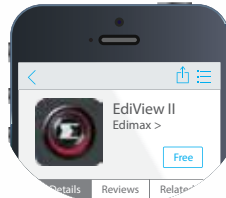


Easy 3-Step Smart iQ Setup

1 Power on network camera.



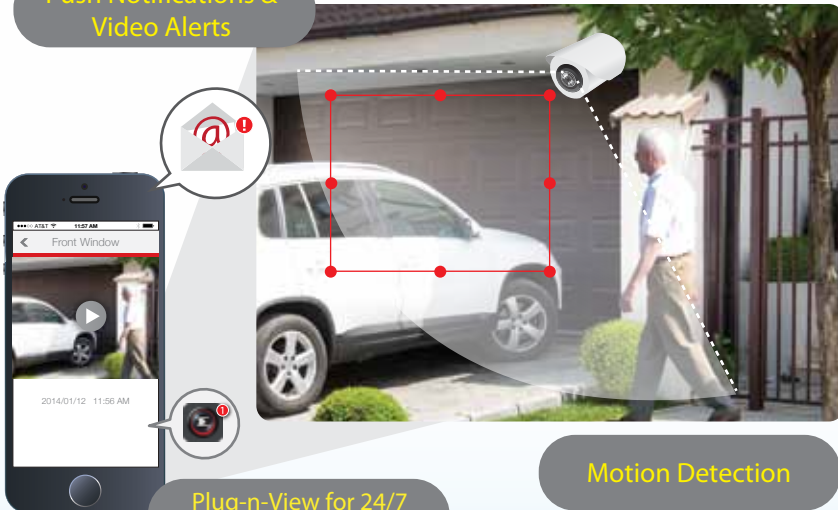
2 Download the EdiView II app from the App Store or Google Play.



3 Pair the camera with your App & Wi-Fi and watch a live stream from anywhere!



Push Notifications & Video Alerts



Plug-n-View for 24/7 Easy Remote Monitoring

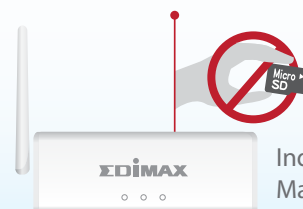
Motion Detection

Outdoor Image Unit



IP66 Outdoor Waterproof

Innovative Outdoor Wi-Fi Security System



Indoor Main Unit

SPECIFICATIONS

FUNCTIONS <ul style="list-style-type: none"> • Easy remote monitoring via iPhone, iPad, Android, PC & Mac • 145 degree diagonal viewing angle • Supports dynamic DNS service • IR filter embedded • Motion detection recording and alerts to MicroSD/SDHC card, email and FTP • MicroSD/SDHC card slot for local storage 	MANAGEMENT <ul style="list-style-type: none"> • EdiView Finder (Windows/Mac) • 16-channel viewer • Web management interface • Firmware upgradable • iPhone & iPad viewer app • Android viewer app 	INTERFACE <ul style="list-style-type: none"> • Ethernet (RJ-45) port • Power jack • Reset/WPS button • External antenna • MicroSD/SDHC card slot • Light sensor • IR LEDs: 20 • LED indicators: Internet, LAN/Wi-Fi LNK/ACT, Power
VIDEO <ul style="list-style-type: none"> • High-speed H.264 & MJPEG video compression • 1280 x 720 up to 30 fps • 640 x 360 up to 30 fps • 320 x 180 up to 30 fps 	VIDEO SETTINGS <ul style="list-style-type: none"> • Resolution: HD (1280 x 720), 640 x 360, 320 x 180, • Frame rate: 5, 10, 15, 20, 25 or 30 fps 	SUPPORTED PROTOCOLS <ul style="list-style-type: none"> • IPv4, HTTP, TCP, ICMP, RTSP, RTP, UDP, RTCP, SMTP, SNMP, FTP, DHCP, ARP, DNS, PPPoE
STANDARDS <ul style="list-style-type: none"> • Fast Ethernet IEEE 802.3/802.3u • Wireless IEEE 802.11b/g/n 	RF OUTPUT POWER <ul style="list-style-type: none"> • 11b: 16dBm–18dBm • 11g: 14dBm –16dBm • 11n: 11dBm –13dBm 	IR LEDS <ul style="list-style-type: none"> • IR LEDs for night illumination up to 15M (7M for clear image)
MEMORY <ul style="list-style-type: none"> • 8MB flash • 64MB SDRAM 	OPERATING CONDITIONS <ul style="list-style-type: none"> • Indoor: 0–40°C • Outdoor: -10~50°C • Humidity: 20–80% RH (non-condensing) 	POWER <ul style="list-style-type: none"> • 12V DC x 1A
DIMENSIONS <ul style="list-style-type: none"> • Outdoor: 63.5 x 147.8 mm • Indoor: 105 x 30.5 x 21 mm 	WEIGHT <ul style="list-style-type: none"> • Outdoor: 330g • Indoor: 40g 	CERTIFICATIONS <ul style="list-style-type: none"> • FCC, CE

FEATURES

- First Innovation Outdoor Wi-Fi Network Camera System with IP66 outdoor network camera and indoor Wi-Fi base station for flexible placement
- Plug-n-View for 24/7 Remote Monitoring with free EdiView II app on iPhone®, iPad® or Android® or 16CH viewer software on computers
- 720p HD Video Quality with high resolution and rich detail
- Night Vision with infrared LEDs, mechanical ICR and auto light sensor
- Motion Detection triggers snapshots or recording and sends to email and ftp
- Push Notifications & Video Alert with event videos and unusual status of the camera.
- IP66 Outdoor Waterproof Design protects the camera from dirt and rain.
- MicroSD/SDHC Card Slot for Local Storage
- Easy Setup & WPS Support

APPLICATION DIAGRAMS



HARDWARE INTERFACE

Outdoor Image Unit

Light Sensor
IR LEDs



Indoor Main Unit

LED Indicators

DC Power Jack

Ethernet Port
(Passive PoE 12V 1A Port)

Detachable
Wireless Antenna

Image
Port

microSD Slot
Reset/ WPS

