

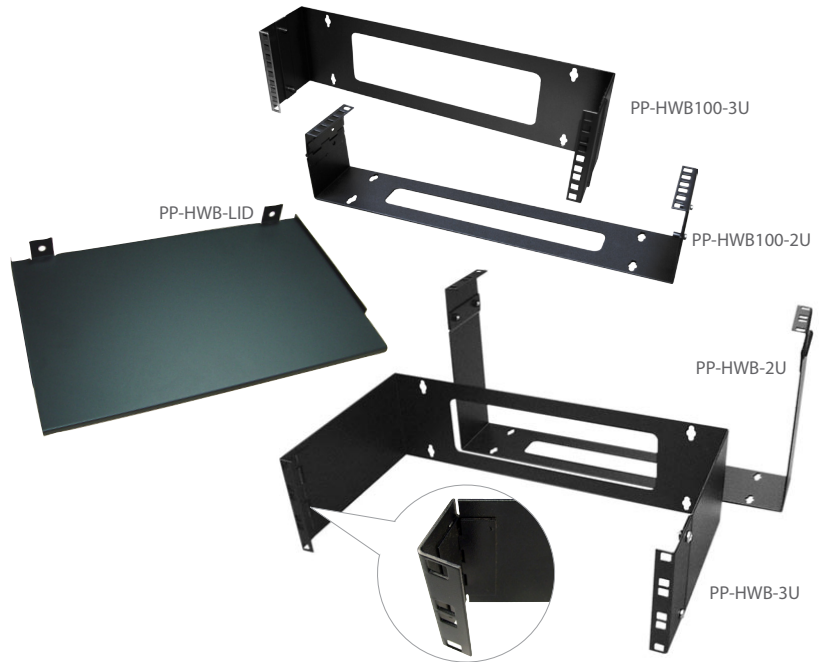
19" HINGED WALL BRACKETS / 10" CABINET

19" Hinged Wall Brackets

FEATURES

- Incorporates swing arm for easy installation and maintenance
- 100mm, 200mm & 300mm depths
- Black colour

Model Code	Depth	Type
PP-HWB100-2U	100mm	2RU
PP-HWB100-3U	100mm	3RU
PP-HWB100-4U	100mm	4RU
PP-HWB100-LID	100mm	Top Shelf/Lid
NEW PP-HWB200-2U	200mm	2RU
NEW PP-HWB200-4U	200mm	4RU
NEW PP-HWB200-6U	200mm	6RU
NEW PP-HWB200-LID	200mm	Top Shelf/Lid
PP-HWB-2U	300mm	2RU
PP-HWB-3U	300mm	3RU
PP-HWB-4U	300mm	4RU
NEW PP-HWB-6U	300mm	6RU
PP-HWB-LID	300mm	Top Shelf/Lid



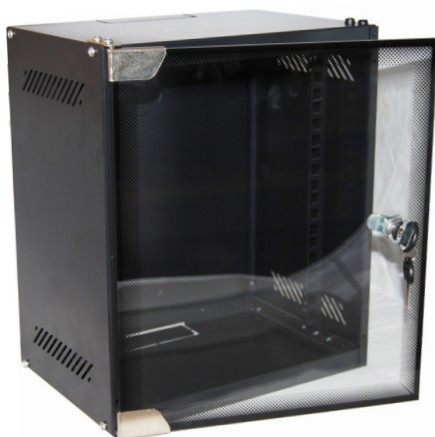
DYNAMIX™

10" Mini Cabinet

MODEL CODE	WxDxH	SIZE
R10WM6	280 x 200 x 329mm	6RU
R10WM6D	280 x 310 x 329mm	6RU
R10WM9	280 x 200 x 462mm	9RU
R10WM9D	280 x 310 x 462mm	9RU

FEATURES

- Front glass door
- Turning angle of front door is over 180°
- Wall mounting installation, bracket included
- Cable entry on both top cover and bottom panel
- Supplied in flat pack
- Material: SPCC Cold Rolled Steel
- Mounting profile thickness: 1.5mm, others: 0.8mm
- Surface finish: powder coated, Gloss black colour



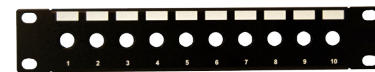
DYNAMIX™

10" Cabinet Panels & Accessories

MODEL CODE	TYPE
PP10-C5E-12	10" 12 Port Cat5e Patch Panel
PP10-C6-12	10" 12 Port Cat6 Patch Panel
PP10-UF-10	10" 10 Port Unloaded F Connector Panel
PP10-UKS-8	10" 8 Port Unloaded Keystone Jack Panel
PP10-CM	10" Cable Management Bar
R10CS-137	10" 1RU Cantilever Shelf, 137mm deep



PP10-C5E-12



PP10-UF-10



PP10-UKS-8



R10CS-137



PP10-CM

DYNAMIX™