

NETWORK SERVER CABINET

SR SERIES 19" NETWORK SERVER CABINETS 800 WIDE

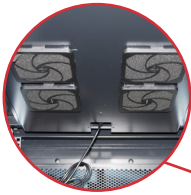
FEATURES:

- Supplied with fixed shelves, fans, cage nuts, castors, levelling feet
- Static loading: 800kg
- Width: 800mm
- Depth: 800mm, 900mm, 1000mm, 1200mm
- Optional plinths available to bolt cabinet to floor
- Optional vertical cable tray available
- Optional baying kit available for cabinet interconnection (RABK)
- Optional mesh front door available
- Vertical mounting profile can be adjusted in 25mm increments
- Supplied complete or in fast assembly flat pack format (FP codes)
- Material: SPCC quality cold rolled steel, gloss black colour, easy clean surface
- Mounting profile 2.0mm, mounting angle 1.5mm, others 1.2mm
- Surface finish: Degrease, acid pickling, rust prevention, parkerizing, pure water cleaning and static electricity plastic painting
- Complies with IEC-60297, ANSI/EIA RS-310-D, IEC297-2, DIN41491;PART1, DIN41494; PART7, GB/T3047.2-92, IP20 rated
- Compatible with 19" International Standard and Metrical and ETSI standards
- 2 Year Warranty on cabinets. Subject to use within the static loading specifications and operation within normal environmental conditions
- 1 Year Warranty on fans

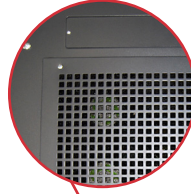


NETWORK SERVER CABINET SR SERIES 19" NETWORK SERVER CABINETS 800 WIDE

Ceiling mounted drop
in 4 way fan tray fitted
with dust filters



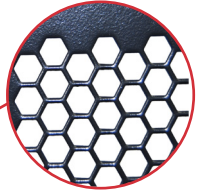
Top mounted
removable fan tray



Top cable entry front and back, also
dual side entry on 800mm wide models.



Vertical uprights,
adjustable forward
and backward



Dual rear
mesh doors

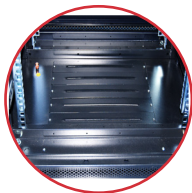


Zinc coated
vertical uprights
with RU markings



2.5" heavy duty
castor wheels
and levelling feet

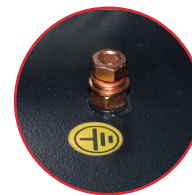
Lockable, removable
side panels



Bottom cable entry



Universal Key
for all locks



Multiple grounding pins to
earth doors and side panels

NETWORK SERVER CABINET

SR SERIES 19" NETWORK SERVER CABINETS 800 WIDE



800mm wide models feature dual front mounted 100mm hinged vertical cable management bars



MODEL CODE	W X D X H (EXTERNAL)	CAPACITY	INCLUDES	M ³	KG
RSR22-8X10	800 x 1000 x 1290mm	22RU	1x Fixed Shelf, 4x Fans, 25x Cage Nuts, 4x Castors and 4x Levelling Feet Dual front and rear mesh doors and Dual 100mm front vertical cable management	0.93	85
RSR27-8X8	800 x 1000 x 1350mm	27RU	1x Fixed Shelf, 4x Fans, 25x Cage Nuts, 4x Castors and 4x Levelling Feet Dual front and rear mesh doors and Dual 100mm front vertical cable management	1.08	90
RSR27-8X10	800 x 1000 x 1405mm	27RU	1x Fixed Shelf, 4x Fans, 25x Cage Nuts, 4x Castors and 4x Levelling Feet Dual front and rear mesh doors and Dual 100mm front vertical cable management	1.05	95
RSR42-8X9	800 x 900 x 2100mm	42RU	3x Fixed Shelves, 4x Fans, 25x Cage Nuts, 4x Castors and 4x Levelling Feet Dual front and rear mesh doors and Dual 100mm front vertical cable management	1.82	150
RSR42-8X10	800 x 1000 x 2100mm	42RU	3x Fixed Shelves, 4x Fans, 25x Cage Nuts, 4x Castors and 4x Levelling Feet Dual front and rear mesh doors and Dual 100mm front vertical cable management	2.01	162
RSR42-8X10FP	800 x 1000 x 2100mm	42RU	Flat Pack, 3x Fixed Shelves, 4x Fans, 25x Cage Nuts, 4x Castors and 4x Levelling Feet Dual front and rear mesh doors and Dual 100mm front vertical cable management	1.11	165
RSR45-8X8	800 x 800 x 2205mm	45RU	3x Fixed Shelves, 4x Fans, 25x Cage Nuts, 4x Castors and 4x Levelling Feet Dual front and rear mesh doors and Dual 100mm front vertical cable management	2.14	168
RSR45-8X8FP	800 x 800 x 2205mm	45RU	Flat Pack 3x Fixed Shelves, 4x Fans, 25x Cage Nuts, 4x Castors and 4x Levelling Feet Dual front and rear mesh doors and Dual 100mm front vertical cable management	1.16	170
RSR45-8X10	800 x 1000 x 2205mm	45RU	3x Fixed Shelves, 4x Fans, 25x Cage Nuts, 4x Castors and 4x Levelling Feet Dual front and rear mesh doors and Dual 100mm front vertical cable management.	2.14	168
RSR45-8X10FP	800 x 1000 x 2205mm	45RU	Flat Pack 3x Fixed Shelves, 4x Fans, 25x Cage Nuts, 4x Castors and 4x Levelling Feet Dual front and rear mesh doors and Dual 100mm front vertical cable management	0.79	170
RSR45-8X12	800 x 1200 x 2205mm	45RU	3x Fixed Shelves, 4x Fans, 25x Cage Nuts, 4x Castors and 4x Levelling Feet Dual front and rear mesh doors and Dual 100mm front vertical cable management	2.30	172