

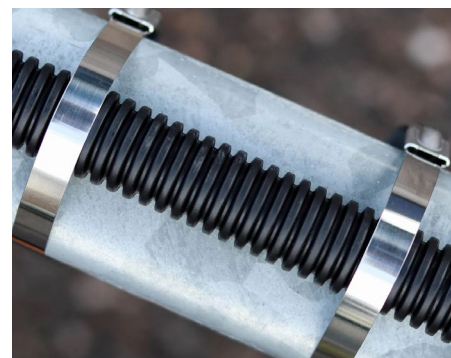
STAINLESS STEEL CABLE TIES

DESCRIPTION

Durable & resilient, DYNAMIX 316 Stainless Steel Cable Ties provide a secure solution for fastening cables, tubes, & components in the most demanding environments. Featuring a self-locking head design, they enable quick installation & a reliable hold at any point along the tie body. These ties offer exceptional strength, excellent chemical resistance, & superior corrosion protection, making them ideal for indoor, outdoor, underground, & even direct burial applications. EN45545-2 approved for safety in railway applications, these cable ties deliver long-lasting performance in the harshest industrial settings.

FEATURES

- Material: 316 stainless steel for the most corrosive environments
- Designed to hold cables, tubes, and components in domestic appliance, electronics and electric
- Self-locking head design speeds installation
- Colours: Silver
- Working (Operation) Temperature: -80°C~+538°C
- Flammability: non-flammable
- UV & Chemical Resistant
- Compliance: UL (Underwriters Laboratories): File E258930 based newest standard UL62275
- EN45545-2 approved



STAINLESS STEEL CABLE TIES

PRODUCT CODE	DESCRIPTION	MAX BUNDLE Ø	TENSILE STRENGTH	PACK TYPE	PACK QTY
DYSS200X46	4.6 x 200mm 316L	61.9mm	890N, 90.8kgs	Zip Lock Bags	100
DYSS350X46	4.6 x 350mm 316L	112.8mm	890N, 90.8kgs	Zip Lock Bags	100
DYSS350X79	7.9 x 350mm 316L	112.8mm	1600N, 163kgs	Zip Lock Bags	50
DYSS500X79	7.9 x 500mm 316L	146.5mm	1600N, 163kgs	Heat Sealed Bags	50
DYSS838X79	7.9 x 840mm 316L	265.7mm	1600N, 163kgs	Heat Sealed Bags	50
DYSS1000X79	7.9 x 1000mm 316L	315mm	1600N, 163kgs	Heat Sealed Bags	50

Please note we took the up-most care to compile the information in this datasheet. To the best of our knowledge all info provided were correct at the time of creation. Should any specs change we try to update info accordingly. Information are subject to change without notice. In the case that you find any irregularity please inform our team at contactus@dynamix.co.nz

Last updated: 1 September 2025

01092025_LM/FP

