



# H80f Multi **2K+ × 3**

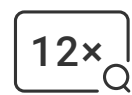
## Triple-Lens Smart Home Wi-Fi Camera

### See, zoom and protect, like never before

The H80f Multi, EZVIZ's first triple-lens outdoor camera, is designed to provide exceptional outdoor security with unseen professionalism. The integrated capability of three powerful 2K+ lenses allows the camera to capture a wide view and close-up details simultaneously, supported by an incredible, non-blurry 12-times zoom. Its embedded AI can effectively detect and lock on both people and vehicles to record an ongoing activity from left to right, while you receive more informative mobile alerts accompanied by double snapshots of both the visitor and the car.



2K+ Triple Lenses



12x Mixed Zoom



Double Snapshots for AI-Powered Human / Vehicle Shape Detection



Auto-Zoom Tracking on Human / Vehicle



One-Click Return to Pre-Set Directions and Zoom Ration



Two Patrol Modes for Auto-Security



360° Panoramic View



Color Night Vision



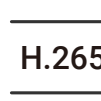
Active Defense with Siren & Strobe Light



IP67 Weatherproof Design



Two-Way Talk



H.265 Video Compression



Smart Integration with Google Assistant & Amazon Alexa<sup>1</sup>



Supports MicroSD Card (Up to 512 GB) & EZVIZ CloudPlay Storage<sup>2</sup>



Easy Installation



## Triple the lenses, more 360 degrees of protection

EZVIZ unprecedentedly brings the professional-level, advanced triple-lens technology to a wider application scenarios of homes and businesses. Combining three lenses of different focal lengths, respectively on a motorized body, the H80f Multi upgrades visibility, versatility and functionality to a greater extent.

# 2K+



# Triple Lenses

340° Horizontal

70° Vertical

### 01 360° plus 12x zoom, for every detail that matter

With the rotational triple-lens camera, you no longer need to install multiple cameras for different angles at difference distances. With the H80f Multi, you can control the camera to see from all directions, while smoothly zooming in and out with impressive clarity for even tiny details that need extra attention.



## Panoramic View



## Close-up View



## 02 Big or small, seen on one screen

Whether you need to focus on distant objects or keep an eye on nearby activities, the H80f Multi camera has them in focus. It uses an advanced image processing technology to render both the wide-angle picture and the close-up details simultaneously on your phone screen. You can easily control the camera to patrol areas of interest, and adjust the zoom to check in-depth.

## 03 Control in a way that's incredibly smooth

With its sophisticated functions and technology, the H80f Multi ensures satisfying user experience with simple controls. Even you zoom in fast for very far objects, the camera completes the tasks accurately even at night, without making loud noises. It also automatically adjusts how fast and wide it rotates based on how clear it sees, providing as much visual information as possible in a wiser way.

AUTO

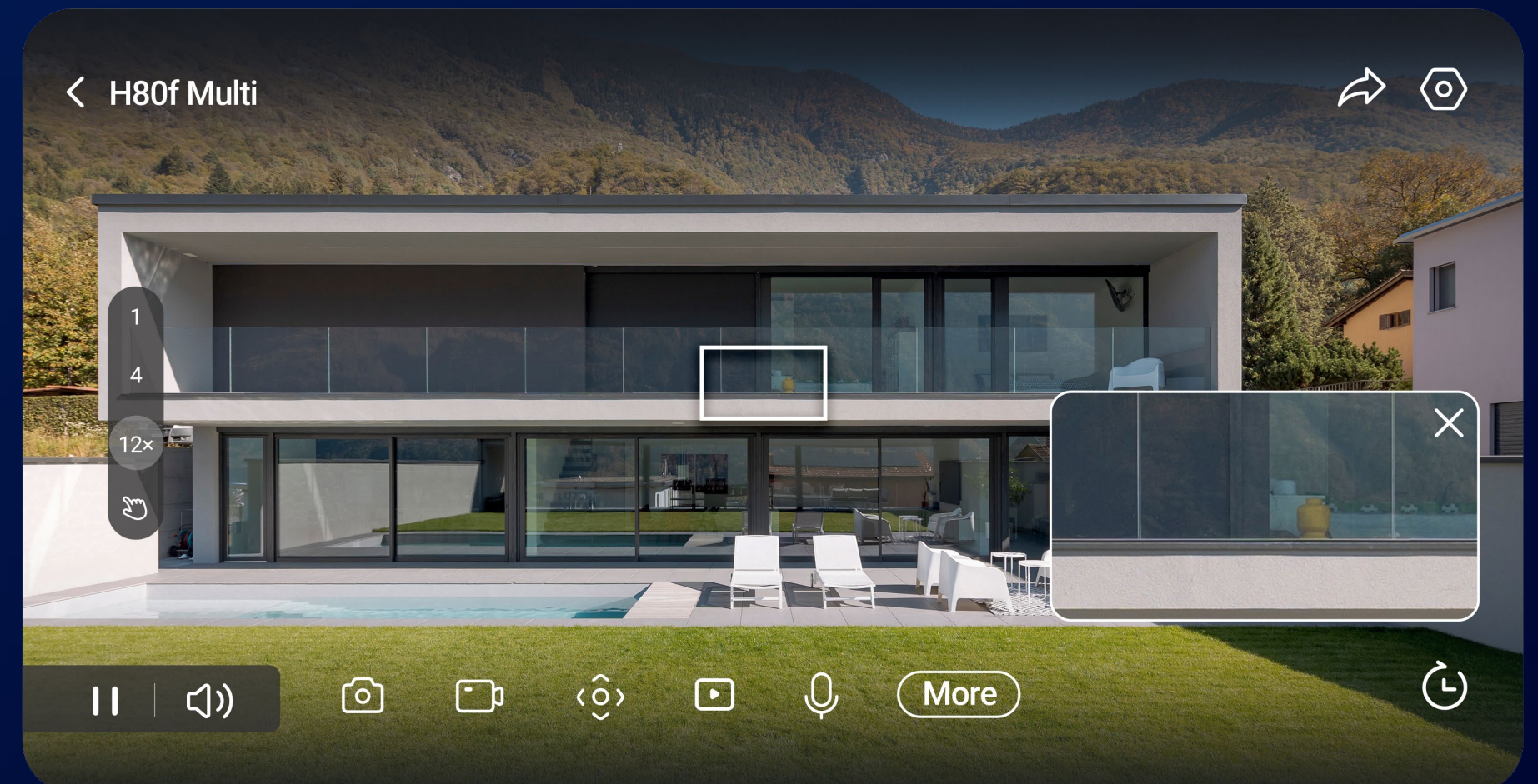
Self-adaptive rotational speed based on zoom ratio



Lag-free zoom for the close-up view



Easy manual control of the 360° view



# Smarter vision, better detection

The H80f Multi is smart enough to distinguish moving people and vehicles from other objects. You no longer need to constantly watch your camera or go through long video files to find an crucial moment – set up the detection preferences and let the camera inform you when it's important.



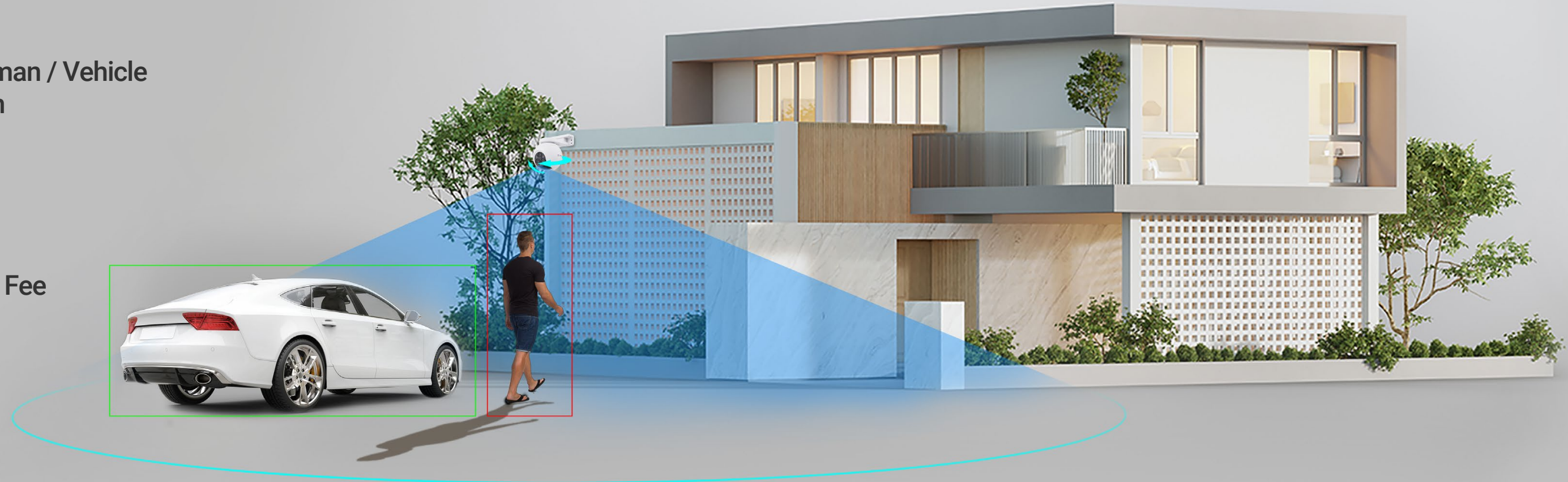
AI-Powered Human / Vehicle Shape Detection



Customizable Detection Zone



FREE No Subscription Fee



## Keep you better informed on both people and cars

It's easy and smart to stay in the know with key visuals of important events triggered by people, cars or both. All detection videos, without being played in full length, are summarized and compiled in a list shown by their snapshots for quick understanding and browsing. You can filter the snapshots by different detection types.



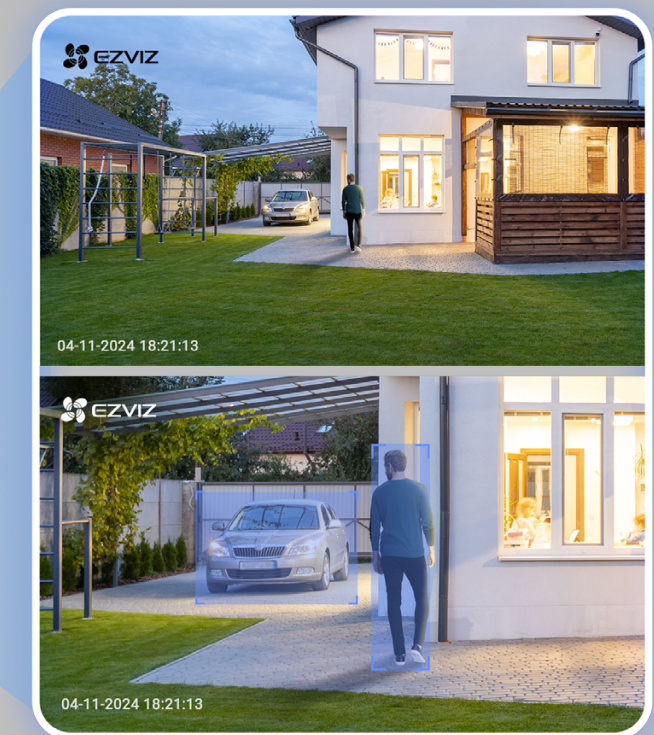
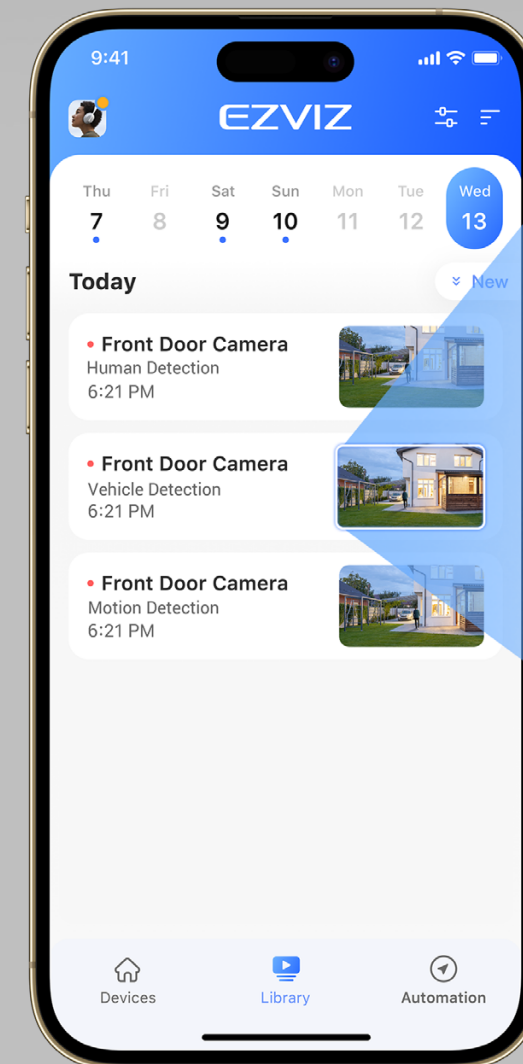
Double Snapshots for AI-Powered Human / Vehicle Shape Detection



Centralized Event Management

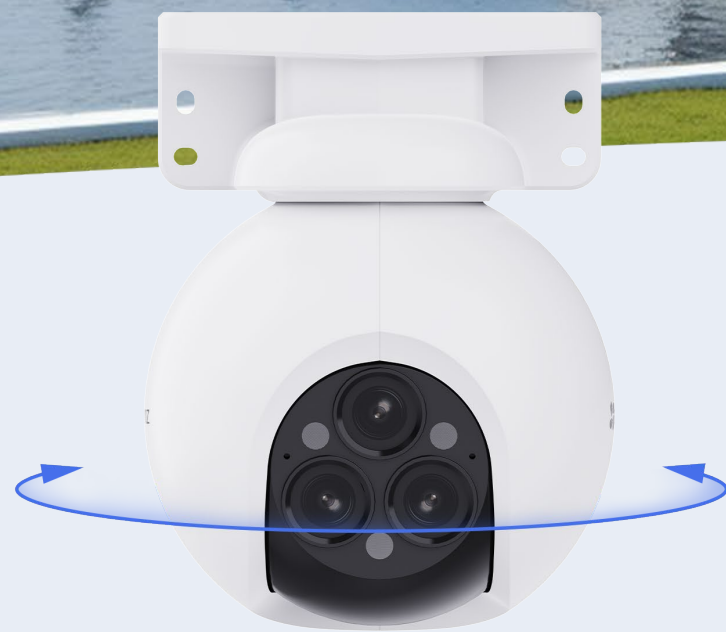


Easy Filtering for Detection Type

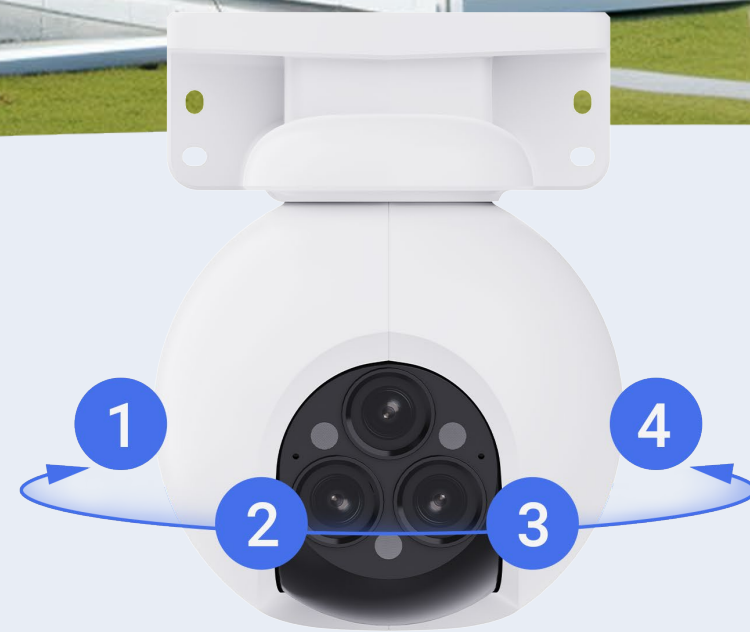


# Patrol automatically for areas that matter

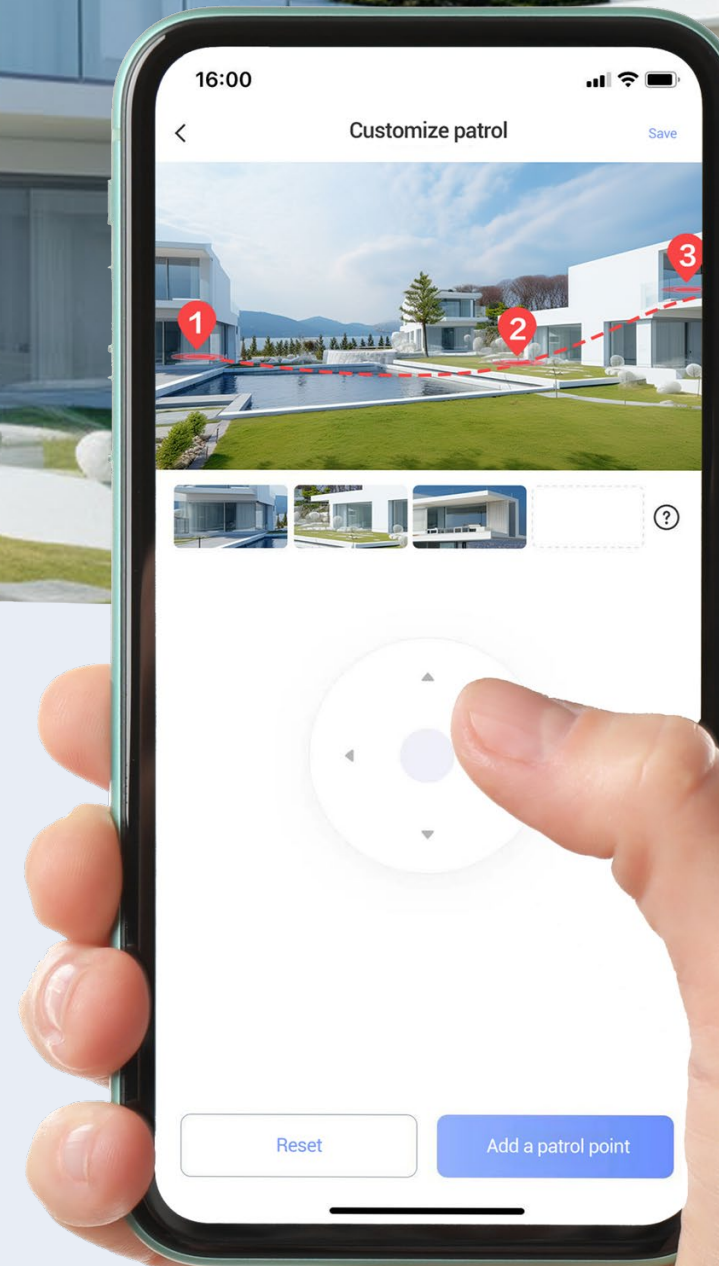
The H80f Multi monitors your property vigilantly with its unique patrol mode. It pans and tilts precisely to your pre-set viewpoints, automating the whole security check routines for greater peace of mind.



Patrol horizontally

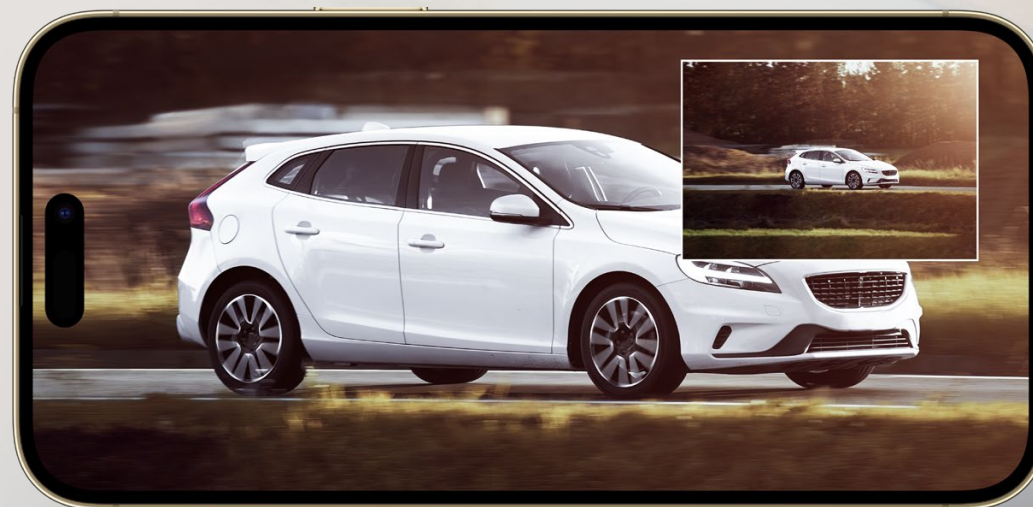


Follow pre-set 4 points

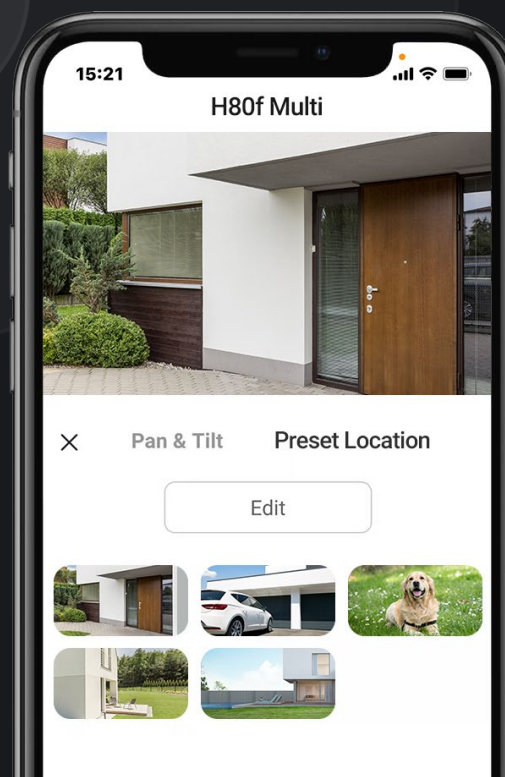
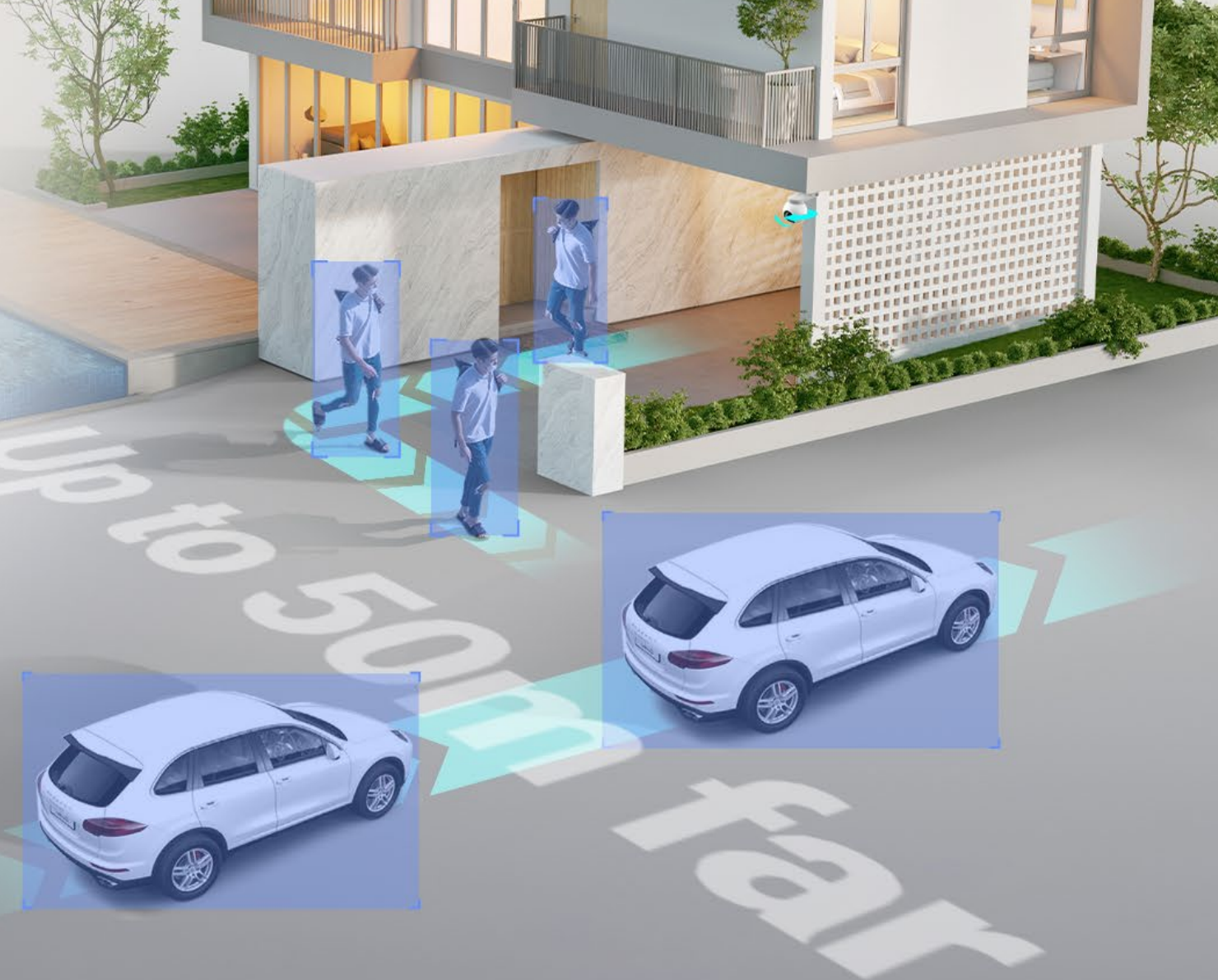


## Smartly capture and follow a moving, faraway target

It's hard for a trespasser or a passing car to move out the sight of the H80f Multi. The camera will automatically lock on the detected person or vehicle, zoom in to see up to 50 meters far, and rotate itself to follow them from side to side to capture the whole action.



*Auto-Zoom Tracking (on both cars & people)*



## One-Click return to pre-set directions and zoom ration

You can easily set up 12 frequently used viewing angles and zoom ratios using the EZVIZ App, allowing the H80f Multi to effortlessly return to your preferred angle or zoom in with just a single click.



Save preferred pan-tilt angles

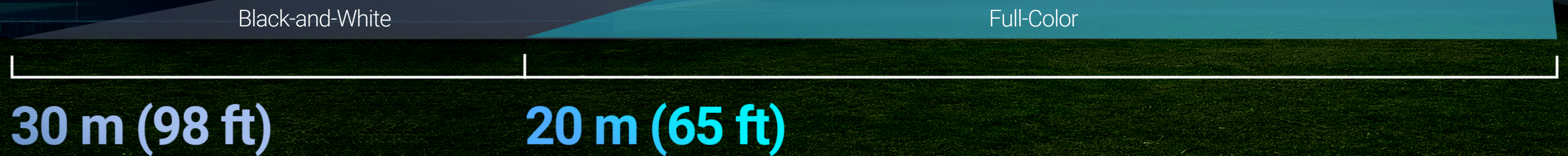


Save zoom ratios for each angle

# Designed to make protection last all night

## 01 Impressive, far-reaching night vision

The H80f Multi camera ensures that no one sneaks in under the cover of darkness. It helps you see far enough to know what's going on around your home.



## 02 Three useful night vision modes will suit any need

- **Full-color night vision**

With its triple built-in spotlights, the H80f Multi adds lights to video for improved clarity, resulting in vibrant and detailed color imaging for enhanced home security.

- **Black-and-white night vision**

If you don't want the lighting to disturb your neighbors, just go with the infrared night vision by changing on the EZVIZ App.

- **Smart night vision**

Or, let the camera decide. In smart mode, the camera will automatically light up the environment upon detection of human motion.



## Built to withstand harsh weathers

---

Designed for the outdoors, the camera maintains its performance even through rain, storm, and snow.



# IP67



## Active defense to deter & safeguard

---

Upon detection of intruders, the camera will set off a loud siren and flash dazzling spotlights to let the uninvited strangers know they have been detected.





### High-quality audio to respond & warn

Easily respond to any visitor by simply using your phone to speak remotely. The H80f Multi can also auto-play a recorded voice message when a motion is detected.



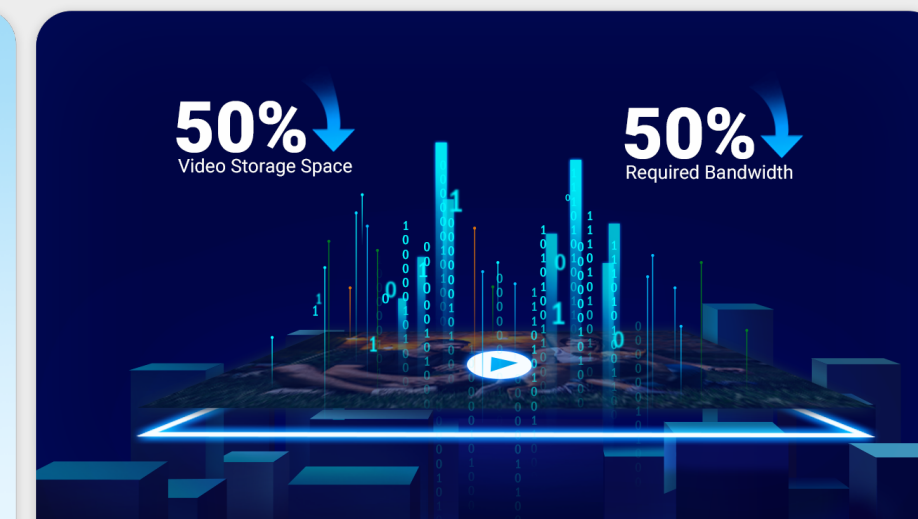
### Smart integration for hands-free control

The camera supports easy integration to your existing voice assistants. You can pull up the video feed by simply saying "Alexa" or "Hey Google".<sup>1</sup>



### Dual storage options for important moments

The camera automatically saves detection-triggered history videos. You can choose to secure them on a large local storage card, or simply by subscribing to the EZVIZ CloudPlay.<sup>2</sup>



### H.265 for enhanced video experience

The H.265 creates a smoother viewing experience while only using about 50% of the data storage space required by cameras with H.264.<sup>3</sup>

1 Amazon Alexa and Google Assistant are not available in certain languages and countries.

2 The local storage card must be purchased separately. The cloud storage service is only available in certain markets. Please verify the availability before making a purchase.

3 Data from EZVIZ Lab's test results under standard conditions. The video compression efficiency will vary with the frequency and complexity of the activity captured, and other environmental factors.

# Specifications CS-H80f-R100-8G444WKFL

## Camera

Image Sensor	1/3" Progressive Scan CMOS * 3
Shutter Speed	Self-adaptive shutter
Lens	2.8mm @ F1.6, viewing angle: 54° (Vertical), 96° (Horizontal), 110° (Diagonal) 6mm @ F1.6, viewing angle: 28° (Vertical), 52° (Horizontal), 60° (Diagonal) 12mm @ F1.6, viewing angle: 14° (Vertical), 25° (Horizontal), 29° (Diagonal)
PT Angle	Pan: 340°, Tilt: 70°
Minimum Illumination	0.05 Lux @ (F1.6, AGC ON), 0 Lux with IR (*data is obtained from EZVIZ laboratories)
Lens Mount	M12
Day & Night	IR-cut filter with auto switch
DNR	3D DNR
WDR	Digital WDR
BLC	Supports
Night Vision	30 m / 98 ft

## Video & Audio

Max. Resolution	2560 × 1440
Frame Rate	Self-adaptive during network transmission
Video Compression	H.265 / H.264
H.265 Type	Main Profile
Video Bit Rate	Quad HD; Full HD; HD adaptive bit rate
Audio Bit Rate	Self-adaptive

## Network

Wi-Fi Standard	IEEE802.11b , 802.11g , 802.11n
Frequency Range	2.4 GHz ~ 2.4835 GHz
Channel Bandwidth	Supports 20MHz
Security	64 / 128 - bit WEP , WPA / WPA2 , WPA-PSK / WPA2-PSK
Transmission Rate	11b : 11Mbps , 11g : 54Mbps , 11n : 150Mbps
Wi-Fi Pairing	AP pairing
Protocol	EZVIZ Cloud Proprietary Protocol
Interface Protocol	EZVIZ Cloud Proprietary Protocol
Wired Network	RJ45 × 1 (10M / 100M Adaptive Ethernet Port)

## Function

Smart Alarm	AI-Powered Human Shape Detection / Vehicle
Customized Alert Area	Detection
Two-Way Talk	Supports
Auto Zoom Tracking	Supports
General Function	Anti-Flicker, Dual-Stream, Heart Beat, Password Protection, Watermark

## Storage

Local Storage	Supports microSD card (Max. 512 GB)
Cloud Storage	Supports EZVIZ CloudPlay storage (subscription required)

# Specifications CS-H80f-R100-8G444WKFL

## General

Operating Conditions	-30°C ~ 50°C, Humidity 95% or less (non-condensing)
IP Grade	IP67
Power Supply	DC 12 V / 1.5 A
Power Consumption	Max. 18 W
Dimensions	168 × 112 × 156 mm (6.61 × 4.41 × 6.14 inch)
Packaging Dimensions	205 × 176 × 194 mm (8.07 × 6.93 × 7.64 inch)
Weight	Product : 575.7 g (20.31oz) With package : 979.89 g (34.56oz)

## In the box

- Camera
- Drilling Template
- Waterproof Kit
- Screw Kit
- Power Adapter
- Regulatory Information × 2
- Quick Start Guide

## Certifications

CE / UL / WEEE / RoHS / REACH

Specifications are subject to change without notice. "🌈", "EZVIZ" and other trademarks and logos are the properties of EZVIZ in various jurisdictions.