

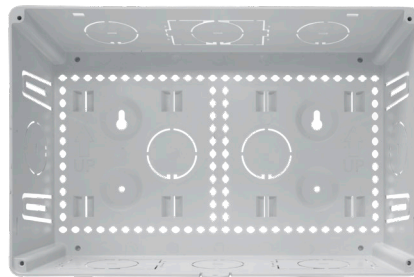
9" RECESSED PLASTIC NETWORK ENCLOSURE

DESCRIPTION

The DYNAMIX 9" Recessed Plastic Network Enclosure is a sleek & reliable solution for housing your networking & audio-video equipment. The DYNAMIX 9" Recessed Plastic Network Enclosure is WiFi-Ready with a slim vented lid for optimal airflow, designed to be installed between 400mm wall studs for a clean, professional look. Made from lightweight, fire-retardant plastic & UL 2416 listed for safety & durability, this enclosure is perfect for modern homes, ensuring strong connectivity & secure installation.

FEATURES

- Designed to be installed between 400mm wall studs
- Flush mount vented lid included with cable knock outs
- Drywall cut out template included
- Modules can be vertical or horizontal mounted
- Lacing tabs for securing equipment directly to enclosure
- Made of fire retardant plastic ideal for RF & Wifi enabled devices
- 3x Top, 3x bottom, 2x rear & side cable entry knockouts
- External Dimensions: 385 x 252 x 111mm (WxHxD)
- Internal Dimensions: 365.56 x 237.56 x 100mm (WxHxD)
- Colour: White
- 2 Year warranty on cabinet



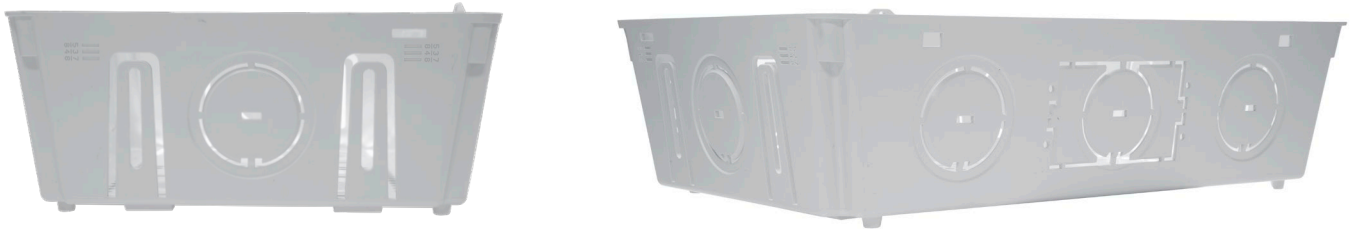
MODEL CODE	TYPE	FTTH COMPLIANT	EXTERNAL SIZE (WxHxD)
HWS-903WR	9" Recessed Plastic Network Enclosure	No	385 x 252 x 111mm

SPECIFICATIONS

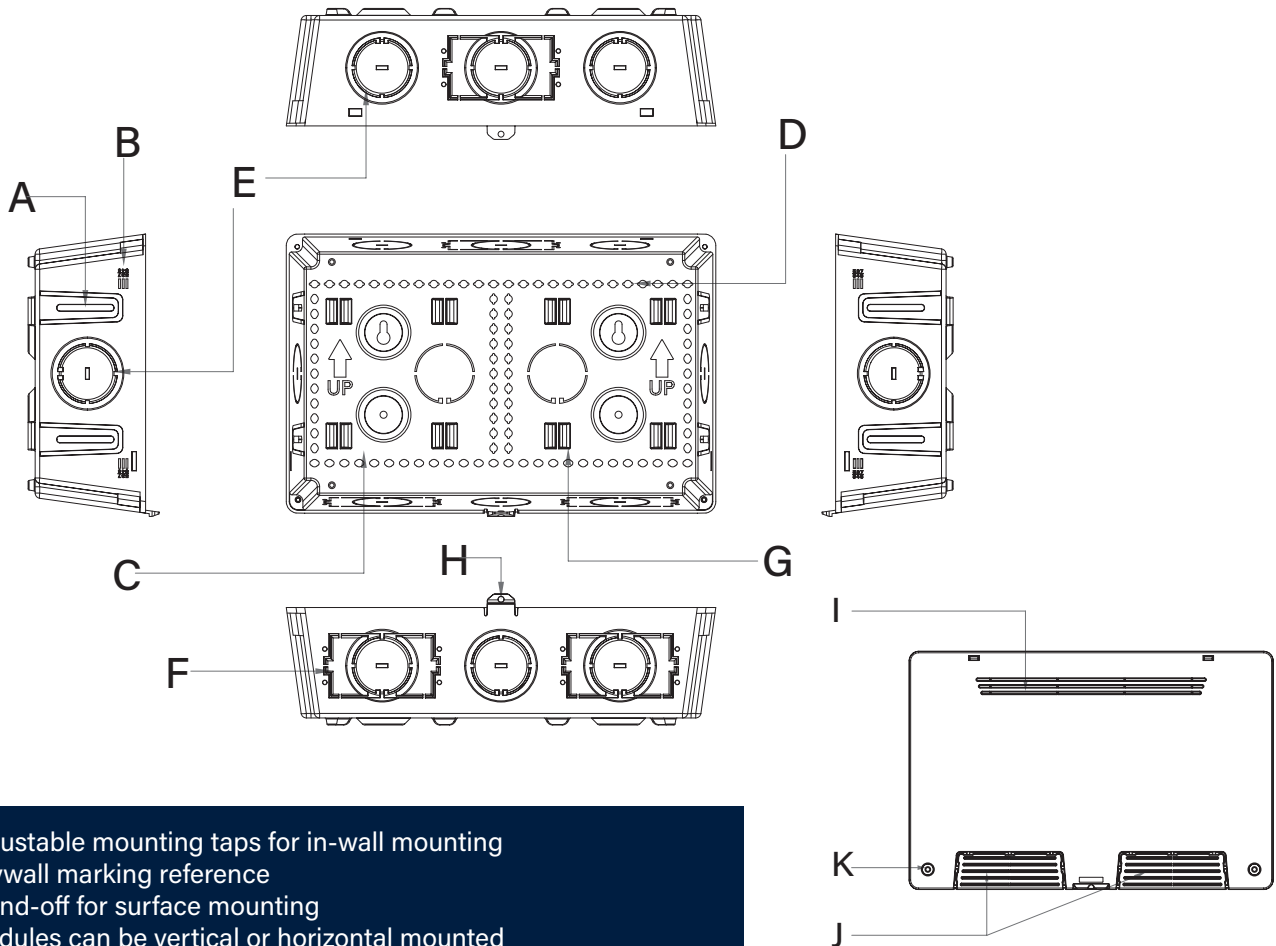
Mounting Type	9" In-wall mounting
Lid Included	Yes, vented, flush fit
Material	Plastic, fire-retardant
Application	Indoor, drywall installation
Lockable Lid	Yes (Lock not included)
External Dimensions (WxHxD)	385 x 252 x 111mm
Internal Dimensions (WxHxD)	365.56 x 237.56 x 100mm
Weight	800gsm
Colour	White



SIDE PROFILE



DRAWING



- A. Adjustable mounting taps for in-wall mounting
- B. Drywall marking reference
- C. Stand-off for surface mounting
- D. Modules can be vertical or horizontal mounted
- E. 3 top, 3 bottom, 2 rear and side cable entry knock-outs
- F. Optimized knock-out selections for optional AC power outlet
- G. Lacing tabs for securing large equipment directly to enclosure
- H. Flange for optional traditional Padlock
- I. Venting
- J. Venting knock-outs for direct cable pass-through
- K. Screw holes for securing door on enclosure

Please note we took the up-most care to compile the information in this datasheet. To the best of our knowledge all info provided were correct at the time of creation. Should any specs change we try to update info accordingly. Information are subject to change without notice. In the case that you find any irregularity please inform our team at contactus@dynamix.co.nz

Last updated: 4 March 2025