

Brateck

LDT81N-C022

# Heavy-Duty Counterbalance Monitor Arm





LDT81N-C022

## Heavy-Duty Counterbalance Monitor Arm

Brateck

- **Quick-Release VESA Plate**  
Allows Easy Installation and Removal
- **Easy Topside Installation**  
No More Crawling under Desks



*Premium Leather Accents  
Meet sleek Functionality*



**Sliding Rail**  
for seamless dual-screen positioning

**Interactive Handle**  
for easy positioning monitors with one hand

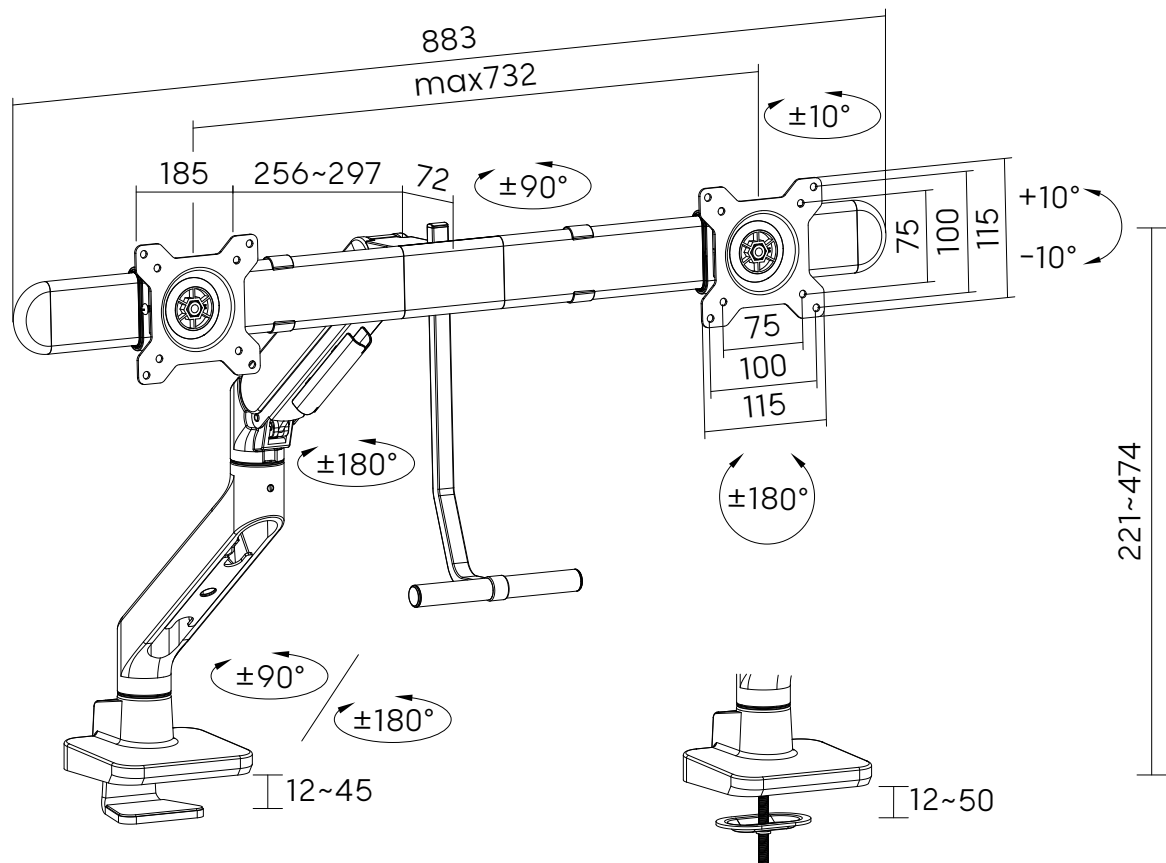


LDT81N-C022

Heavy-Duty Counterbalance Monitor Arm

Brateck

Dimensions (mm)



Item No.	LDT81N-C022
Fit Screen Size	17" - 32"
Weight Capacity (per screen)	1~9kg (2.2lbs~19.8lbs)
Tilt Range	+10°~-10°
Swivel Range	+10°~-10°
Screen Rotation	+180°~-180°
Material	Steel, Aluminum, Plastic