

LVW02-48F

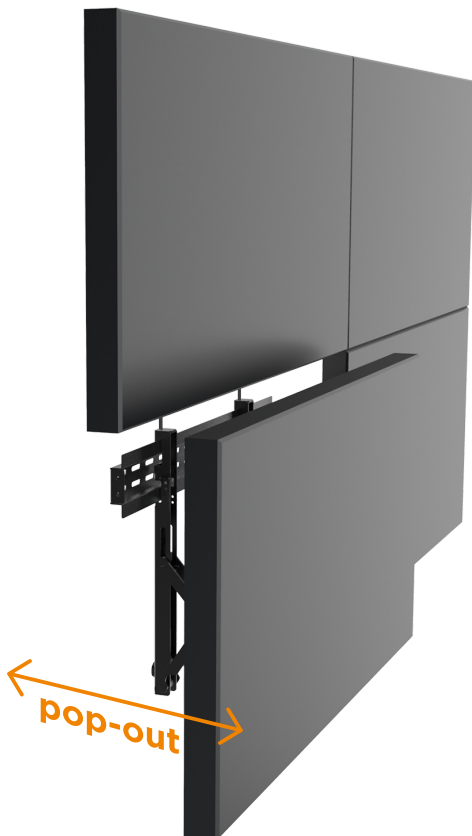
Multi-screen Video wall mounts

Built video wall easily!

Brateck[®]
BRACKET TECHNOLOGY



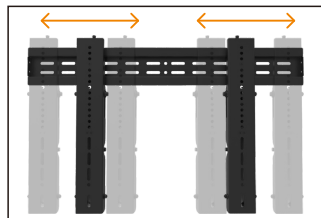
Easily **pop-out** & **quick-lock** mechanism



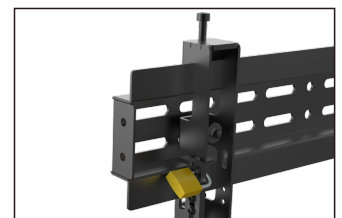
Protects Displays
by removing the possibility of accidental pop-outs via the plastic locking pieces



Built-in Screen Level Adjustment
for seamless display alignment and level



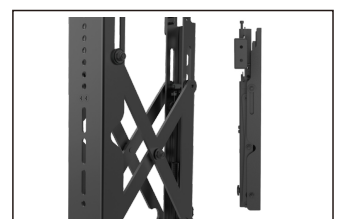
Lateral Shift Brackets
enable easy alignment



Anti-Theft Design
(require for a padlock)



Quick-Lock by a Press
allows easy installation



Easily Pulled Out for Quick Maintenance

LVW02-48F

Multi-screen Video wall mounts

Built video wall easily!

Brateck[®]
BRACKET TECHNOLOGY



Screen Size
37" - 70"



VESA Compatible
200x200 300x300
400x200 400x400
600x400 800x400



Profile to Wall
**56-215mm/
2.2"-8.5"**



Four Times
Strength Tested



Screen Level
+3° ~ -3°



Weight Capacity
45kg/99lbs



Anti-theft

